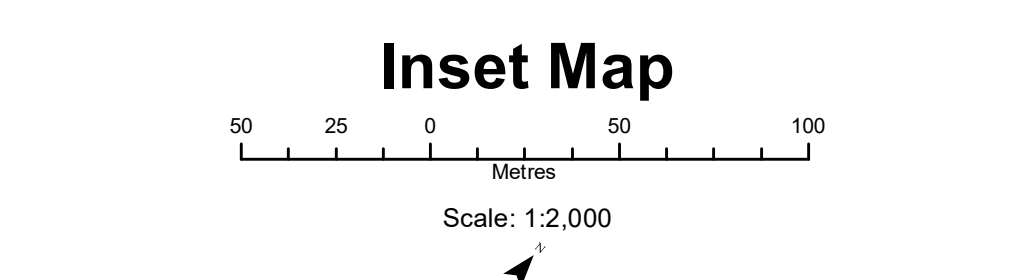


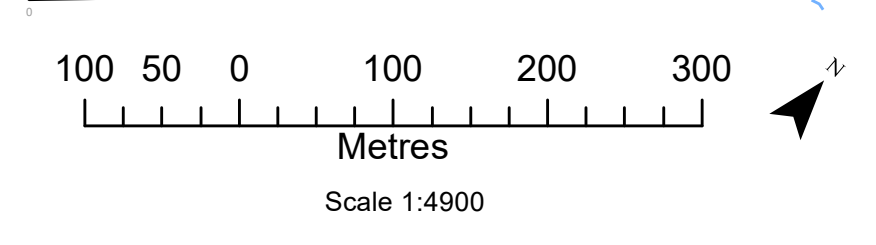
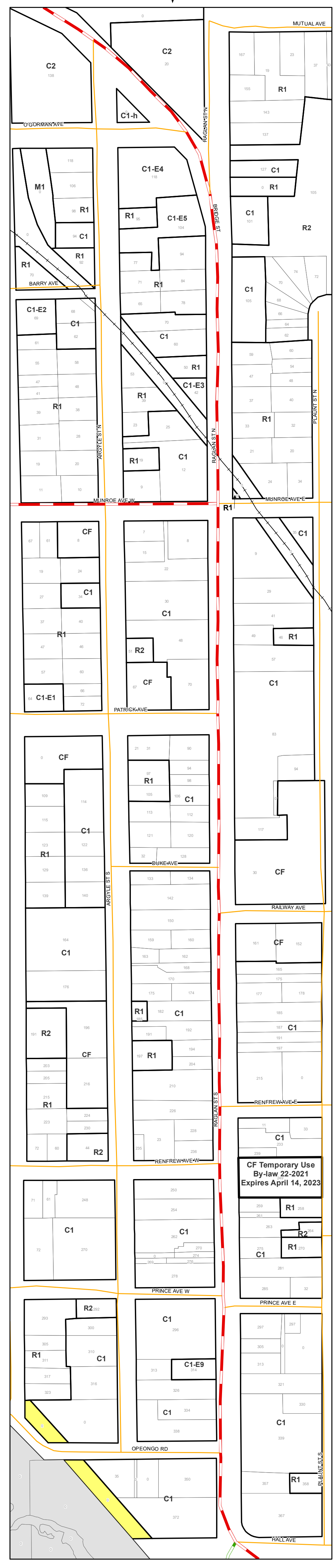
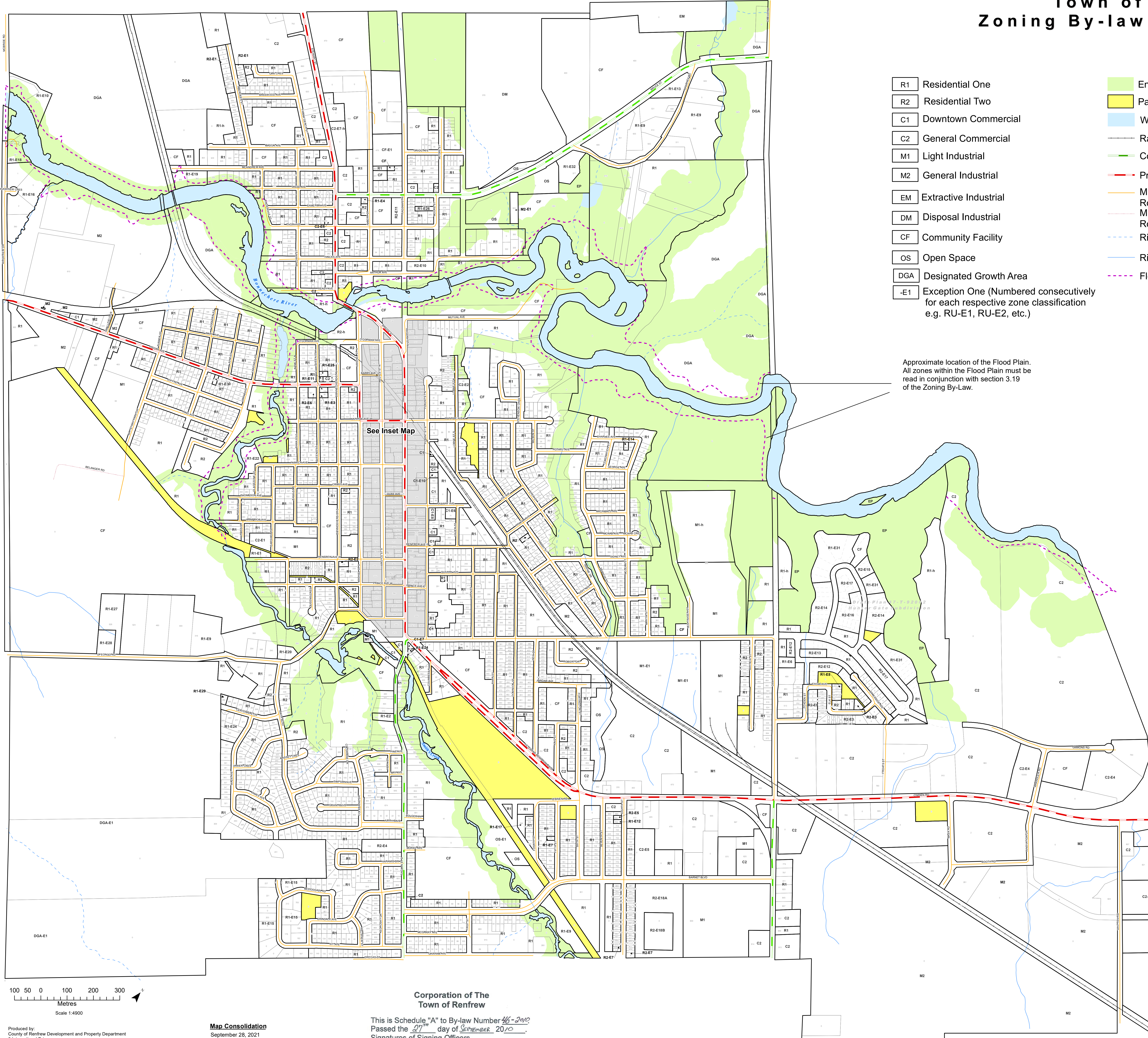
Town of Renfrew Zoning By-law - Schedule 'A'

- R1 Residential One
- R2 Residential Two
- C1 Downtown Commercial
- C2 General Commercial
- M1 Light Industrial
- M2 General Industrial
- EM Extractive Industrial
- DM Disposal Industrial
- CF Community Facility
- OS Open Space
- DGA Designated Growth Area
- E1 Exception One (Numbered consecutively for each respective zone classification e.g. RU-E1, RU-E2, etc.)

- Environmental Protection (EP)
- Parks and Recreation (PR)
- Water
- Railway
- County Road
- Provincial Highway
- Municipal Maintained Road
- Municipal Seasonal Road
- River/Stream, Intermittent
- River/Stream, Permanent
- Flood Plain



Approximate location of the Flood Plain. All zones within the Flood Plain must be read in conjunction with section 3.19 of the Zoning By-Law.



Produced by:
County of Renfrew Development and Property Department
9 International Drive
Pembroke, Ontario K8A 6W5

Sources:
Base Data: OMNR & Renfrew County
Projection: UTM NAD83 Zone 18
Data Acquired on February 5, 2008
MPOD Data Acquired - June 28, 2010

September, 2010
This map is illustrative only. Do not rely on it as being precise indicator of routes, locations of features, nor as a guide to navigation.

Map Consolidation
September 28, 2021

Corporation of The
Town of Renfrew

This is Schedule "A" to By-law Number 46-2012
Passed the 27th day of September, 2012
Signatures of Signing Officers

[Signature] Mayor
[Signature] Clerk